

<https://doi.org/10.25221/fee.342.2>

<http://urn:lsid:zoobank.org:pub:C394BDC4-253C-49BA-9BC5-B528AE97C1B6>

**A CASE OF TERATOLOGY IN WEEVIL *SITONA MACULARIUS*
(MARSHAM, 1802) (COLEOPTERA, CURCULIONIDAE)**

V. V. Sapronov

Ural Federal University named after the First President of Russia B. N. Yeltsin, Institute of Natural Sciences and Mathematics, Ekaterinburg 620002, Russia. E-mail: v.sapronov@list.ru

Summary. A specimen of weevil *Sitona macularius* with morphological anomaly is found and the polymely of a left mid tarsus is described and illustrated.

Key words: Coleoptera, Curculionidae, morphology, abnormality, tarsus.

В. В. Сапронов. Случай тератоза у долгоносика *Sitona macularius* (Marsham, 1802) (Coleoptera, Curculionidae) // Дальневосточный энтомолог. 2017. N 342. С. 43-44.

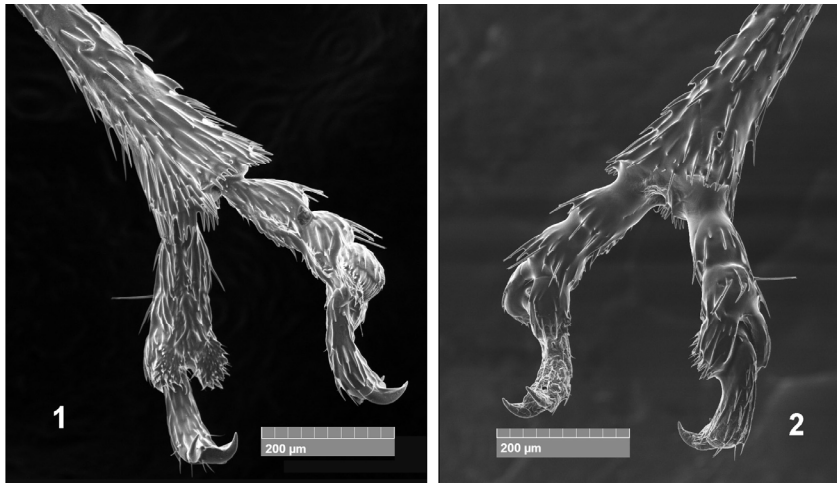
Резюме. Обнаружен экземпляр долгоносика *Sitona macularius* с морфологической аномалией левой средней конечности, выраженной в удвоении лапки.

Teratology in Curculionidae was discussed by few authors (Cmoluch, 1964, 1973, 1985; Chadwick & Brunet, 1985; Hawkeswood, 1991; Nazarenko, 2006, 2014). One specimen of *Sitona macularius* with multiplication of a left mid tarsus was found and this anomaly is described and illustrated in present paper. This specimen is kept in the collection of the Zoological Museum of Ural Federal University. Morphological terms used in this paper follow to Thompson (1992); the terminology of abnormalities follows to Prisny (2009). The tarsal segments were photographed using a scanning electron microscope Tescan Vega 3, which is located at the Institute of Plant and Animal Ecology UB RAS. This study was supported by Act 211 Government of the Russian Federation, contract No 02.A03.21.0006.

***Sitona macularius* (Marsham, 1802)**

MATERIAL EXAMINED. Russia: Sverdlovskaya oblast, Kamensk District, Okulovo village, 56°10'N, 61°57'E, 112 m, 2.VII 2011, 1 ♀.

DESCRIPTION OF ABNORMALITY. The female has two equivalently developed fully formed tarsi on the distal part of the left mid tibia. The basal segment of each tarsus is located in separate, contiguous true corbel at apex of tibia (Figs 1, 2). The distal part of the tibia with the malformation extended in comparison with the top of the normally developed tibia. The tarsi do not differ in their size and shape from the normal form. The segments of tarsi and claws are developed like on the right mid leg. All tarsomeres are covered with hair.



Figs 1–2. Apex of the left mid leg of *Sitona macularius*. 1 – ventral view; 2 – dorsal view.

REFERENCES

- Chadwick, C.E. & Brunet, B.L. 1985. Teratology in two species of beetles (Coleoptera). *Victorian Naturalist*, 103(102) (3): 106–108.
- Cmoluch, Z. 1964. Falle der teratologie bei Russelkafern (Curculionidae, Coleoptera). *Annales Universitatis Mariae Curie Skłodowska Sectio C.*, 19(1): 1–17.
- Cmoluch, Z. 1973. Ein interessanter teratologischer fall bei *Sitona hispidula* F. (Curculionidae, Coleoptera). *Polskie pismo entomologiczne*, 43: 443–447.
- Cmoluch, Z. 1985. Weitere interessante teratologische fälle bei *Sitona lineatus* (L.) und *Dorytomus tremulae* (Payk.) (Curculionidae, Coleoptera). *Polskie pismo entomologiczne*, 55(4): 819–823.
- Hawkeswood, T.J. 1991. Review of the history, biology and host plants of the Australian weevil *Chrysolopus spectabilis* (Fabricius) (Coleoptera: Curculionidae: Aterpinae). *Spixiana*, 14(1): 17–25.
- Nazarenko, V.Yu. 2006. A case of teratology in weevil *Hypera transsylvanica* (Coleoptera, Curculionidae). *Vestnik Zoologii*, 40(2): 181–183. [In Russian with English summary].
- Nazarenko, V.Yu. 2014. Morphological anomalies in Molytinae weevils (Coleoptera, Curculionidae). *Ukrainian Entomological Journal*, 1(8): 69–72. [In Russian with English summary]
- Prisniy, Yu.A. 2009. Classification of morphological anomalies of the beetles (Coleoptera). *Belgorod State University Scientific Bulletin*, 11(66): 72–81. [In Russian with English summary]
- Thompson, R.T. 1992. Observations on the morphology and classification of weevils (Coleoptera, Curculionoidea) with a key to major groups. *Journal of Natural History*, 26: 835–891.

© **Far Eastern entomologist (Far East. entomol.)** Journal published since October 1994.

Editor-in-Chief: S.Yu. Storozhenko

Editorial Board: A.S. Lelej, S.A. Belokobylskij, M.G. Ponomarenko, E.A. Beljaev, V.A. Mutin, E.A. Makarchenko, T.M. Tiunova, P.G. Nemkov, M.Yu. Proshchalykin, S.A. Shabalin

Address: Federal Scientific Center of the East Asia Terrestrial Biodiversity (former Institute of Biology and Soil Science), Far East Branch of the Russian Academy of Sciences, 690022, Vladivostok-22, Russia.

E-mail: storozhenko@biosoil.ru

web-site: <http://www.biosoil.ru/fee>